

LEVEL INDICATION | ECONO GAUGE HEADS

MODEL 750 & 750LS GAUGE HEAD



Features

- Economical Design.
- Optionally available with patented energised Liquid Seal for a Zero-Emission solution.
- Close Cable Tolerances for trouble-free operation.



FEATURES

Economical

- Standard Model 750 has only 4 distinct parts.
- Easy to install.

Optional Patented Energised Liquid Seal

- The energised Liquid Seal of the Model 750LS fills the cable with sealing grease, denying even small amounts of gas to escape along cable.
- Integrated seal and wiper design recovers grease from the cable, ensuring long periods between replenishment.
- Grease top-up easy with integrated 1/8" zerk.
- Maintains seal 5 - 10 times long than similar grease-seal competitors.
- Protected by patents US 8,833,158 and CAN 2,734,915

ACCESSORIES

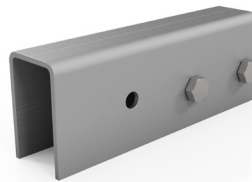
Top Roller Bracket

When retrofitting a Model 750 or 750LS Gauge Head onto an existing tank, or installing it outside of using a complete Hawk-eye Level Indication system, the use of a Top Roller Bracket (EIWA-0030) to help guide the cable from the gauge head to the indicator is strongly recommended.

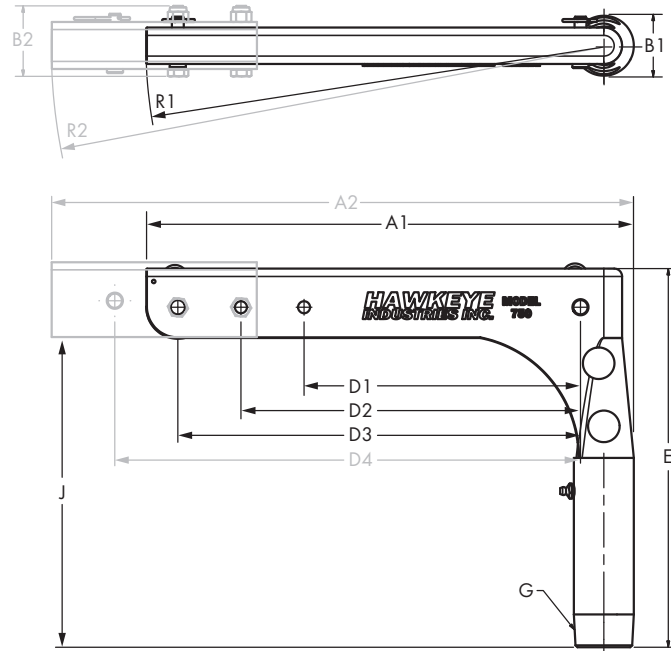


Extension

The optional extension bolts onto the Model 750 or Model 750LS and increases the maximum pulley span an additional 2 inches.



DIMENSIONS



Dimension	Model 375LS	
A1	Overall Length	15.5
B1	Overall Width	2.0
C	Cable Span = Pulley Span + 1.3	
D1	Pulley Span 1	8.8
D2	Pulley Span 2	10.8
D3	Pulley Span 3	12.8
E	Overall Height	12
G	Connection Size 1	1-1/2 MNPT
J	Clearance	9.8
R1	Installation Radius	14.5
	Weight	4 lb
With optional extension		
A2	Overall Length	18.5
B2	Overall Width	2.3
D4	Pulley Span 4	14.8
R2	Installation Radius	17.5

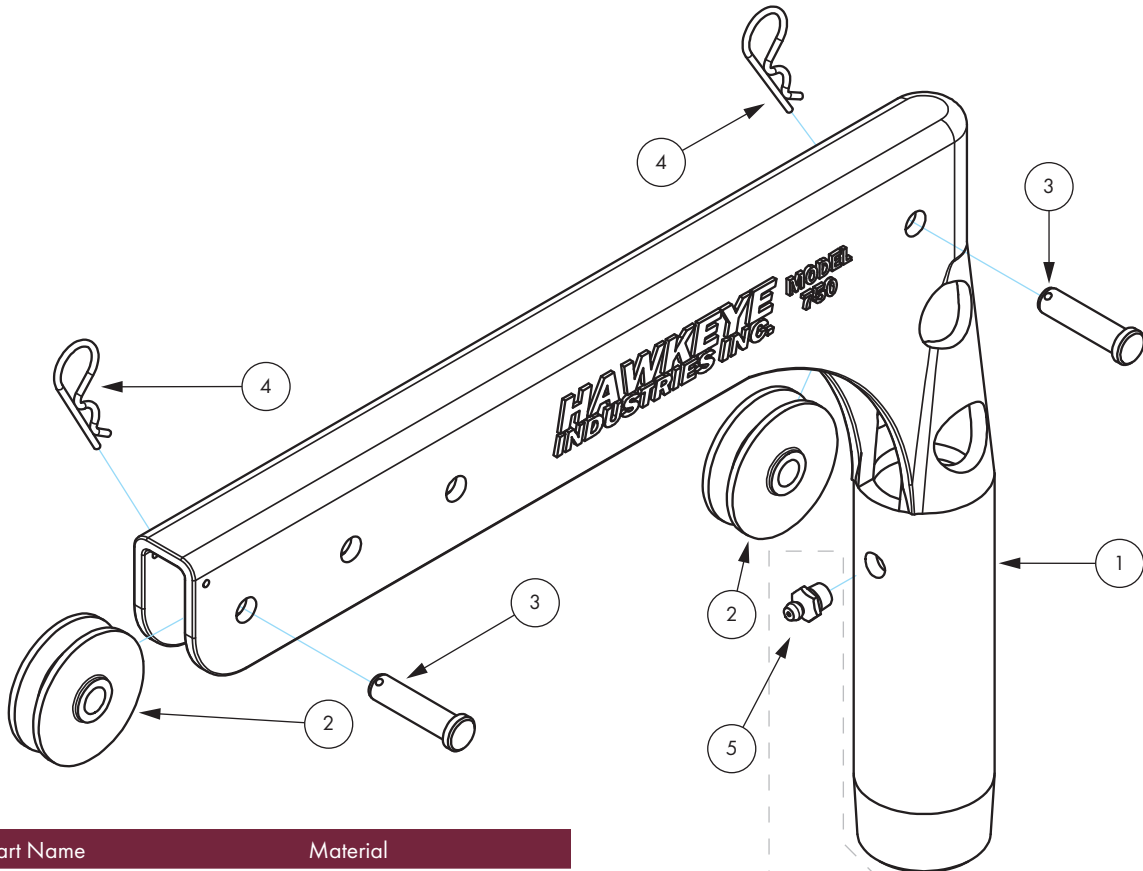
OPERATING SPECIFICATIONS

Measuring Principle	Mechanical (Float)
Maximum Range	24 m [80 ft]
Local Display	Tank Mounted Gauge Board & Indicator
Process Connection	1-1/2 MNPT
Process Temperature	- 40 °C to 60 °C (w/ LLDPE Float)
Ambient Temperature	- 40 °C to 70 °C (w/ LLDPE Float)
Operating Pressure†	0.15 bar [2 psi]

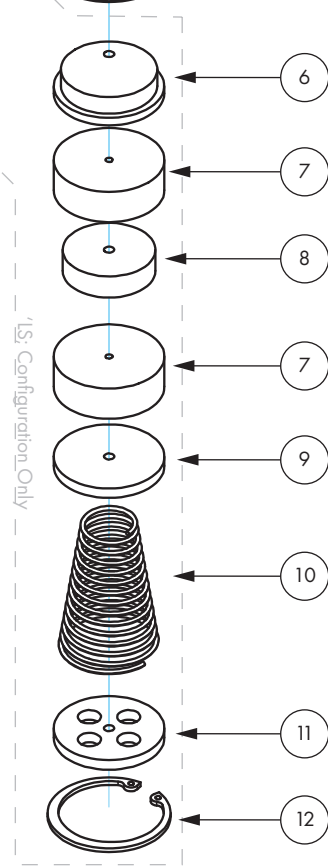
†Applies to Model 750LS variant only.



PARTS LIST & MATERIALS OF CONSTRUCTION



Item	Part Name	Material
1	Body	Cast Aluminum
2	Pulley	PVC
3	Pulley Axle	18-8 SS
4	Pulley Axle Hair Pin	18-8 SS
5	LS - Grease Zerk	ZP CS
6	LS - Taper Cap	Nylatron
7	LS - Gasket	eFKM (Sponge Viton)
8	LS - Spacer	Nylatron
9	LS - Spring Plate	Nylatron
10	LS - Spring	302 SS
11	LS - Vent Plate	Nylatron
12	LS - Retaining Ring	18-8 SS



PACKAGING

Model 750 Gauge Heads are shipped ready to install. Gauge Heads are boxed individually and include installation instructions. If a Float Cable Assembly has been ordered along side the gauge head, it will be included in the box. Model 750LS gauge heads ship with the Float Cable Assembly already installed in the gauge head. Package dimensions are 15.25" x 12" x 2.5" with shipping weight of 6 lb.



SYSTEM INFORMATION

The Model 750 and 750LS Gauge Head forms the core of a complete *Econo level indication system*, which includes parts designed to work together.

A complete system includes:

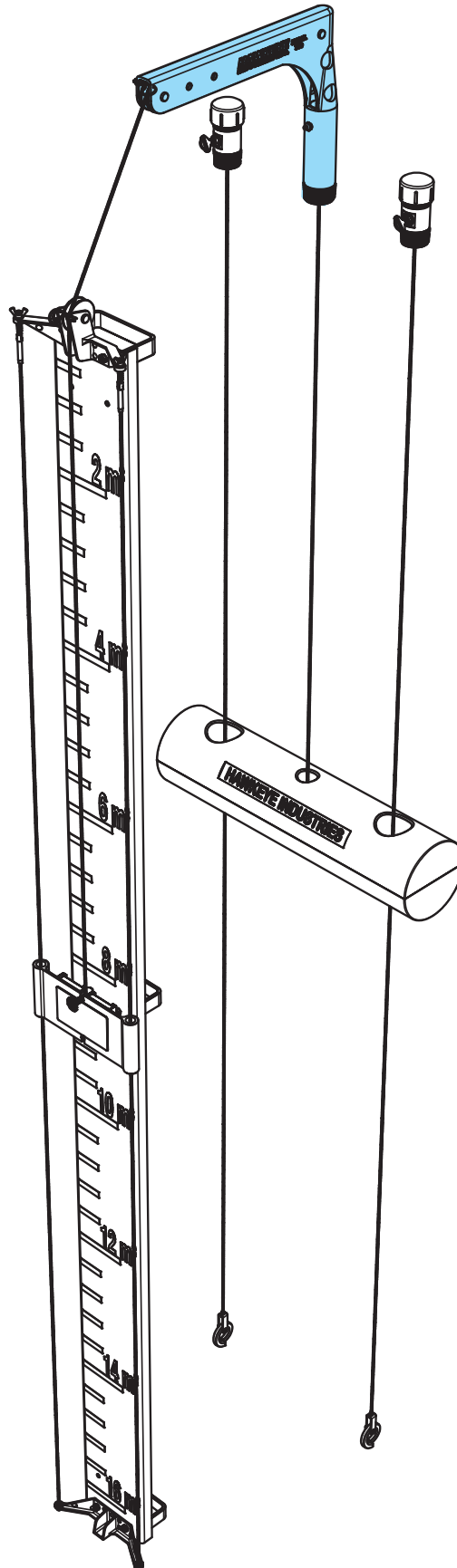
- Model 750 or 750LS Hawk Gauge Head;
- LLDPE (Red) Float and Float Guides;
- Graduated Gauge Board; and,
- Hi Viz Guided Indicator.

See the Model 750/750LS Level Indication System Flyer for more configuration and option information.

ORDERING INFORMATION

Individual Model 750 or Model 750LS Gauge Head

Most configurations are stocked for quick delivery. For installations outside of a complete Model 750 Level Indication System, use of the top roller bracket (EIWA-0030) is strongly recommended.



Gauge Head		M75 A - 0 0 B 0			
		[A] Seal		[B] Trim	
Selection	Flag	Selection	Flag		
Standard	0	Standard	0		
Liquid Seal	L				
Examples					
Model 750 Open Gauge Head, Standard Trim				M750-0000	
Model 750LS Liquid Seal Gauge Head, Standard Trim				M75L-0000	

The Float Cable Assembly connects a float, through the gauge head, to the indicator. Use of a FLCA is strongly recommended for the Model 750, and is required for the Model 750LS. The Model 750LS comes with FLCA installed prior to shipping.

Recommended Accessories		FLCA - H H A 0			
		[H] Height		[A] Service	
Selection	Flag	Selection	Flag		
4 ft	04	Standard	1		
5 ft	05	Acid	2		
...	...				
80 ft	80				
Examples					
Float Cable 16 ft STD				FLCA-1610	
Float Cable 32 ft ACID SVC				FLCA-3220	
Float Cable 80 ft STD				FLCA-8010	
For retrofit installation or installations outside of using a complete Model 750 or Model 750LS Level Indication System, an unguided Top Roller Bracket is strongly recommended					
		EIWA - 0 0 3 0			
Examples					
Top Roller Bracket - Unguided AL				EIWA-0030	

