

## DOWNHOLE



### CONELOK™ SHEAR COUPLINGS

Conelok™ Shear Couplings provide consistent tensile rod-parting activation, while maintaining the torsional strength of the sucker rod string.



### SEATING CUPS

The proprietary material used on Hawkeye's Seating cups allows high temperature operation. Available in API 11 AX S12 sizes, as well as many diameters and interferences.



### POLISHED ROD BULLETS

The Hawkeye Industries Inc. Polished Rod Bullets come in an array of rod and box sizes, offering a wide range of thread and packing protection.



### TUBING DRAIN

This Tubing Drain significantly out-performs drains available today. The pressure activated device, allows oil and other sediments to flow from the tubing string, enabling safer, cleaner, and easier well maintenance.



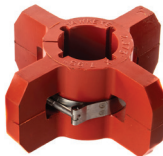
### TUBING SHEAR

The Tubing Shear is a box-by-pin tubing coupling used when release of the tubing string in tension is desired. The robust interlocking castellated design resists torque, and internal supports resist compression.



### PUMP OUT PLUGS

The Hawkeye Industries Inc. pump-out plug is a premium, cost-effective temporary tubing plug. The single use pressure activated device, located at the bottom end of the tubing string, temporarily seals the string ID for testing, setting packers and keeping debris out.



### TUBING CENTRALIZER

Flexible, durable and economical way to protect and insulate the tubing string

## HDPE FITTINGS



### TRANSITION FITTINGS ID CONTROLLED HDPE TO STEEL

Polyethylene to steel weld-end non-ID obstructed fittings seamlessly connect polyethylene pipe to steel pipe. Hawkeye Industries Inc.'s ID Controlled Transition Fitting are PE 100 standard, and offer a piggable alternative to traditional, non-ID controlled fittings.



### FABRICATED & MOLDED HDPE FITTINGS

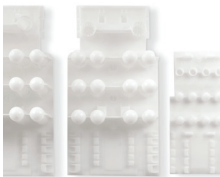
Polyethylene fittings, manufactured from raw billet materials, or injection molded come in a wide range of styles and sizes suitable for new or existing gas pipeline systems.



### TRACER WIRE

Tracer, or locating wire, buried next to non-metallic pipe and conduit (i.e. thermoplastic gas pipelines), allows line detection with conventional equipment.

## CASED CROSSING



### RACI CASING SPACERS

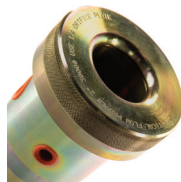
Innovative RACI spacers isolate carrier pipes from casing pipe in a simple and cost-effective manner. The unique RACI design provides projections around the entire circumference of the carrier pipe, and has no fasteners to scratch or mar the casing during installation.



### WRAP AROUND END SEALS

Flexible, durable and economical end seal solution.

## FLOW PROVING



### CRITICAL FLOW PROVER

The critical flow prover (CFP), uses principles of compressible flow to determine flow rate by measuring only upstream pressure and temperature. The rugged design of this critical flow prover ensures accurate, repeatable results.



2110 70 Ave NW  
Edmonton, AB, Canada T6P 1N6  
Toll Free: (800) 910-4295  
Phone: (780) 490-4295  
Fax: (780) 490-4290  
[www.hawk-eye.com](http://www.hawk-eye.com)

Contents © 2006-2021 Hawkeye Industries Inc. This document is uncontrolled, and is subject to change without notice. Please refer to [www.hawk-eye.com](http://www.hawk-eye.com) for the most up-to-date product information.  
EFFECTIVE 17MAR2021 Printed in Canada.



# LINE CARD

1-800-910-4295

[www.hawk-eye.com](http://www.hawk-eye.com)

# TANKAGE - LEVEL INDICATION



## MODEL 1000 REDTAIL DRY SEAL GAUGE HEAD

This sealed float-activated level gauge features a unique dry-seal design making it superior to other sealed level gauging systems. It can be relied upon to measure storage and production tanks, with an 20+ year history and over 8000 units installed globally.



## MODEL 1500 ROADSIDE DRY SEAL GAUGE HEAD

Using the same principles as the Redtail Model, the Roadside is a compact design suited for higher pressure applications as well as underground tanks. The renowned Hawkeye durability and maintenance-free design are evident in this level gauge.



## MODEL 2000 GOSHAWK LEVEL TRANSMITTER

The Goshawk transmitter adds 4-20 mA electronic level indication to the Redtail Hawk and Roadside Hawk Sealed Gauge Head Systems.



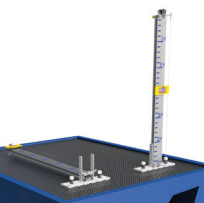
## MODEL 750 / 750LS GAUGE HEAD

The Model 750 Gauge Head provides a simple and economical gauging choice. The easy-to-install gauge works on any size storage, production or mud tank. Also available with a Liquid Seal (LS) option, for low cost vapor control.



## MODEL 375LS GAUGE HEAD SYSTEM

Designed for the rental tank market, the Model 375LS Gauge Head offers reliable liquid-seal performance in a robust low-profile package. Comes with both 1-1/2 MNPT and 3/4 FNPT connections for new builds or retrofits, and is available in trims for acid service.



## MODEL 150 OPEN TOP TANK FOLDING TOP-MOUNT SYSTEM

The Model 150 OTT System provides reliable indication for open top prismatic or mud tanks. The gauge board folds down for transport, and if bundled with the cinch plate and magnetic float guide anchor, requires no welding to install.



## GUIDED FLOATS PE AND STAINLESS STEEL

Hawkeye's iconic red polyethylene guided floats are the industry standard for level gauging systems. Stainless steel floats available for high temperature service. Both polyethylene and steel floats work with Hawkeye's float guide cable system, and can be used with permanent guide anchors or the drop-in float guide cable anchor.



## HI-VIZ INDICATORS GUIDED AND WRAPAROUND

Hawkeye's guided indicator has always been the first-choice for convenience and reliability, and the new high-viz indicators continue that legacy. Engineered to work with all of Hawkeye's floats and gauge heads, the new guided indicator comes complete with the top roller guide bracket, bottom bracket, and terminated cables for direct mounting to the gauge board.

Also available is the new hi-viz wrap-around indicator, engineered to work with all of Hawkeye's gauge boards, and any open, or liquid-seal gauge head. The wrap-around indicator comes complete with an unguided top roller bracket.



## GRADUATED GAUGE BOARDS

Rugged and easy to install external level measurement, compatible with all Hawkeye gauge heads and indicators. Comes standard with blue graduations on anodized aluminum. 24 x 120m<sup>3</sup> and 32x160m<sup>3</sup> boards stocked, but most any custom and application-specific markings can be turned around in just a few days



## GAUGE BOARD BRACKETS MAGNETIC AND WELD-ON

For new builds, both a 3" offset and 5" offset weld-on bracket are available with holes pre-drilled for gauge board mounting. Additionally, magnetic gauge board brackets are available for weld-free applications.



## LEVEL SWITCHES

Hawkeye Industries Inc. offers electric and pneumatic gauge board mounted single-point level indication products ideal for level alarms, emergency shut downs, pump start /stop and any other application that requires activation based on tank fluid level.



## SERIES 570 COOPER'S HAWK BULK LEVEL GAUGE

The Cooper's Hawk Tank Level Gauge offers an easy to read visual level measurement for bulk product tanks, thanks to the high-visibility sight glass. The Cooper's Hawk also includes a rate scale for metering chemical injection pumps. Also available as the float-activated Greyhawk level gauge.

# TANKAGE - VENTING



## MODEL 200 & 300 TVTH VENTING GAUGE HATCH

An economical and traditional venting gauge hatch suitable for sweet (Model 200), sour (Model 300) and acid (Model 400) service.

The Model 400 provides Inconel trim and a high-performance coating suitable for continuous exposure in up to 32% HCl.



## MODEL 500 LOCKDOWN HATCH

The Model 500 provides secure non-venting tank access with a pressure-tight and leak proof design.



## SERIES 4000 MARSH HAWK DEEP-SET VENTING GAUGE HATCH

The Marsh Hawk is a deep-set pressure and vacuum relief venting gauge hatch for atmospheric tanks. With recessed seals for both pressure and vacuum relief, the Marsh Hawk resists freezing, providing reliable year-round operation.



## SERIES 5000 EPRV EMERGENCY PRESSURE RELIEF VENT IN 8, 10, 12, 20 & 24" SIZES

The Hawkeye Series 5000 EPRV is a dead-weight high flow pressure relief device for liquid storage and process tanks. Available in 8, 20 and 24" API connections, as well as 10, 12, 20 and 24" ANSI 150# connections.



## SERIES 6000 PVRV DEDICATED RELIEF VENT

Featuring Hawkeye's patent-pending UBR valve technology, the Series 6000 PVRV is available in pressure + vacuum relief, as well as pressure-only and vacuum only configurations, as well as end-of-line (atmospheric relief) and in-line (pipe-away) styles.



## RISERS & SPOOLS

Hawkeye offers fabricated risers and spools to connect and adapters most common tank nozzles to any venting product.

# TANKAGE - SKIMMERS



## SERIES 1230 FLOATING SKIMMERS

The Series 1230 floating skimmer is a non-metallic means to skim product from produced water tanks or any other application to draw product from the contents surface, regardless of the overall tank level.



1-800-910-4295  
www.hawkeye.com