



Tank Preparation

This document contains the recommended procedures for preparing a tank for installation of any Hawkeye Gauge Head system, including gauge board and float guides.

Requirements

Prior to modifying a tank, ensure you use the correct procedure for your particular gauge system, as dimensions and alignment vary between level gauging systems. Installation is preferred on clean, empty tanks, although installation on in-service tanks is possible using provided alternate procedures.

Contents

A.) Preparing the Tank for a Gauge Head

- A1.) Redtail Gauge Head
- A2.) Roadside, Sparrowhawk and Model 750 Gauge Head

B.) Preparing the Tank for a Float Guide Kit.

C.) Preparing the Tank for a Gauge Board

- C1.) Gauge Board w/ Redtail Gauge Head
- C2.) Gauge Board w/ Roadside Gauge Head
- C3.) Gauge Board w/ Sparrowhawk or Model 750 Gauge Head

D.) No-Weld Alternatives

- D1.) Float Guide Anchor
- D2.) Magnetic Gauge Board Clips

Tools

- ▶ Welder
- ▶ Measuring Tape
- ▶ Chalk Line
- ▶ Plumb Bob
- ▶ Level
- ▶ Hole saw or similar

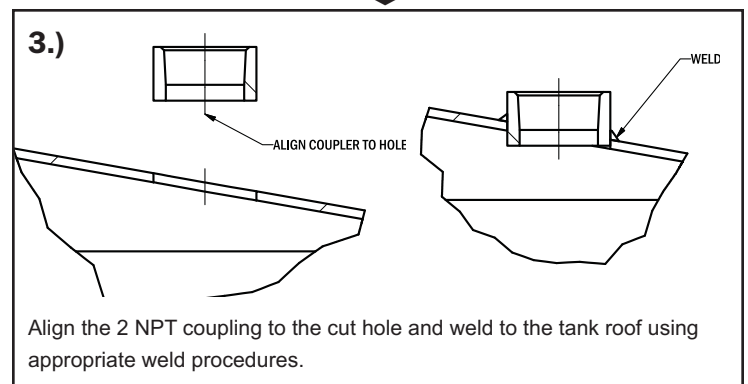
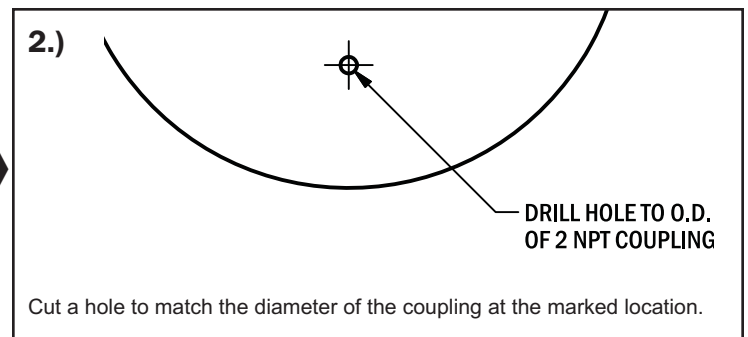
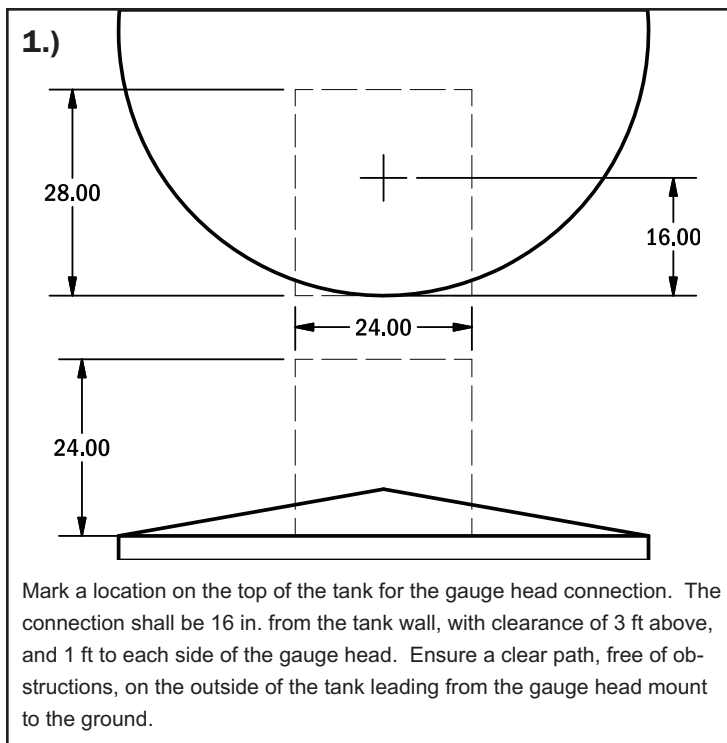
Parts Required

QTY	Part
	Redtail Hawk Gauge Head
▶ 1	2 NPT Female x Female Coupling
	Roadside, Sparrowhawk and Model 750 Gauge Head
▶ 1	1-1/2 NPT Female x Female Coupling
	Float Guide Kit
▶ 2	1-1/4 NPT Female x Female Coupling
▶ 2	Float Guide Cable Anchor Rings OR
▶ 1	Poly Float Guide Cable Anchor
	Gauge Board Preparation
▶ varies	Weld-on Gauge Board Clips OR
▶ varies	Magnetic Gauge Board Clips

A.) Preparing the Tank for a Gauge Head

Please note that the preparation procedures differ for different gauge heads. Please ensure you use the proper procedure for your gauge head.

A1.) Redtail Gauge Head



Redtail Gauge Head Preparation Complete, proceed to section B.

A2.) Roadside , Sparrowhawk , and Model 750 Gauge Head

1.)

28.00

16.00

24.00

24.00

Mark a location on the top of the tank for the gauge head connection. The connection shall be 16 in. from the tank wall, with clearance of 3 ft above, and 1 ft to each side of the gauge head. Ensure a clear path, free of obstructions, on the outside of the tank leading from the gauge head mount to the ground.

2.)

DRILL HOLE TO O.D. OF 1-1/2 NPT COUPLING

Cut a hole to match the diameter of the coupling at the marked location.

3.)

ALIGN COUPLER TO HOLE

WELD

Align the 1-1/2 NPT coupling to the cut hole and weld to the tank roof using appropriate weld procedures.

Roadside , Sparrowhawk , and Model 750 Gauge Head Preparation Complete, proceed to section B.

B.) Preparing the Tank for a Float Guide Kit

1.)

16.00

7.50

7.50

Mark two locations, 7.5 in on either side of the gauge head mount.

2.)

DRILL HOLES TO O.D. OF 1-1/4 NPT COUPLINGS

Cut a hole to match the diameter of the 1-1/4 couplings at the marked locations.

3.)

ALIGN COUPLER TO HOLE

WELD

Align a 1-1/4 NPT coupling to each cut hole and weld to the tank roof using appropriate weld procedures.

4.)

MARK CENTER POINTS ON TANK BOTTOM ALIGNED FROM CENTERS OF FLOAT GUIDE MOUNTS

Suspend plumb bob from centre of float guide mount (1-1/4 NPT coupling) to tank floor.

5.)

WELD RING TO CENTER POINT

WELD

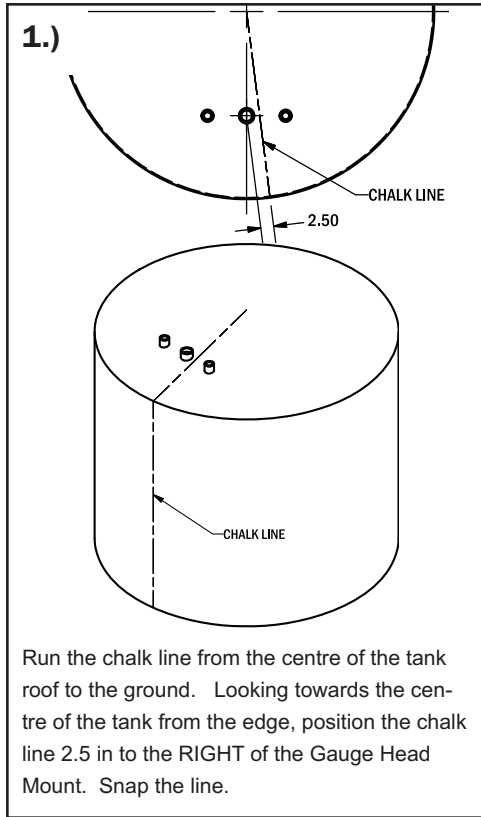
At the plumb location on the tank floor, weld the float guide anchor ring. See section D for No-Weld alternative to float guide anchors

Float Guide Kit Preparation Complete, proceed to section C.

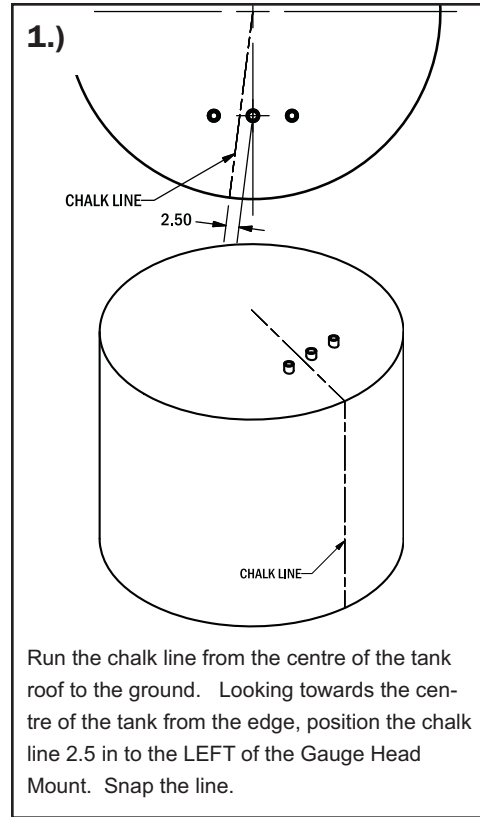
C.) Preparing the Tank for a Gauge Board

Please note that the preparation procedures differ for different gauge heads systems. Please ensure you use the proper procedure for your gauge head.

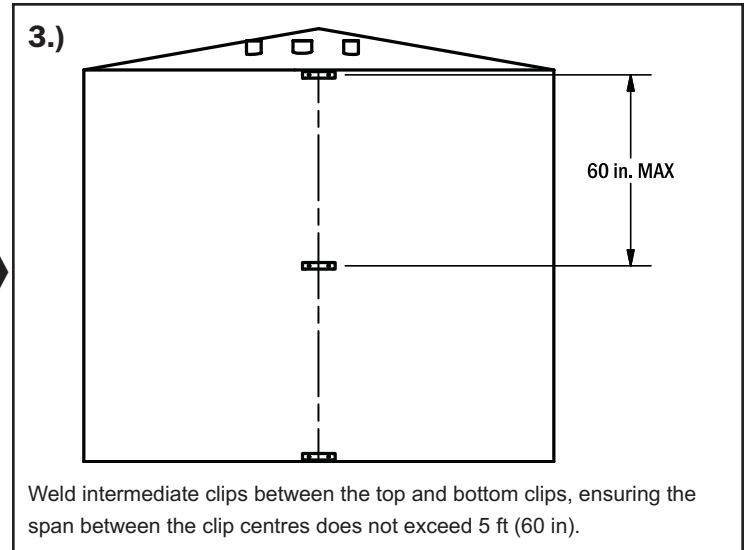
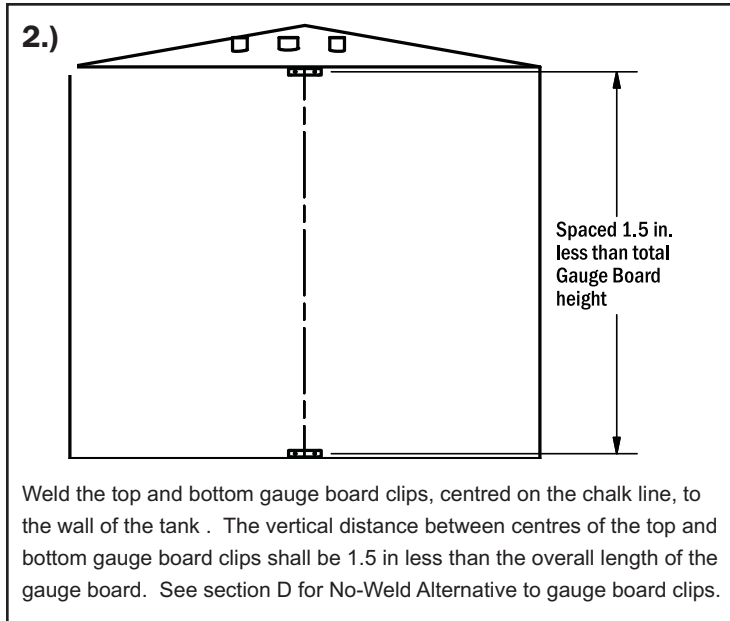
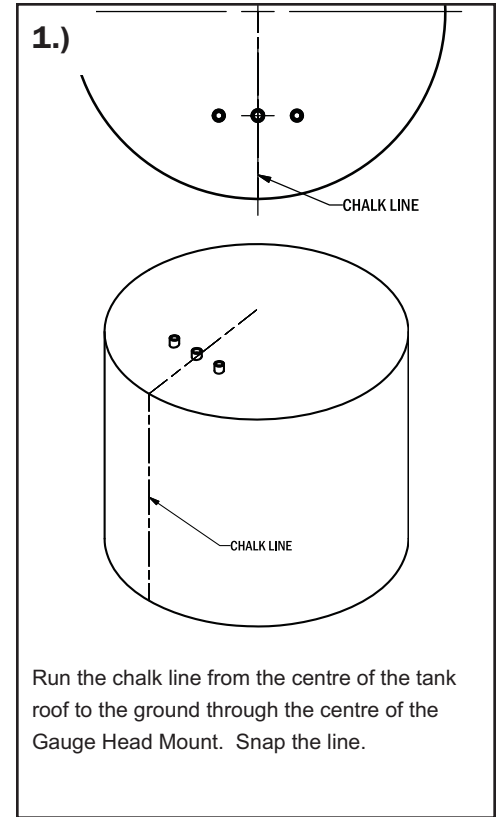
C1.) *Redtail*



C2.) *Roadside*



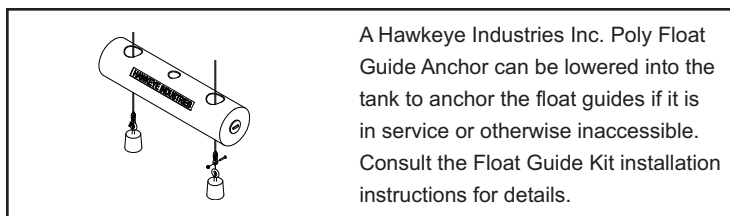
C3.) *Sparrowhawk, and Model 750*



Tank Preparation Complete.

D.) No Weld Alternatives

D1.) *Float Guide Cable Anchor*



D2.) *Magnetic Gauge Board Clips*

