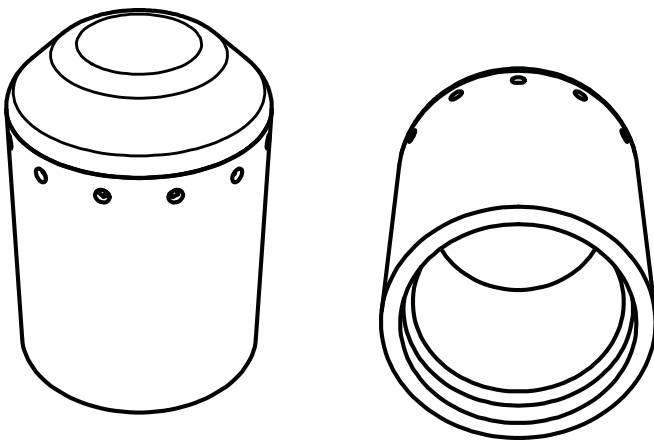




This document contains the recommended procedures installing a Hawkeye Industries Inc. Pump-Out Plug.

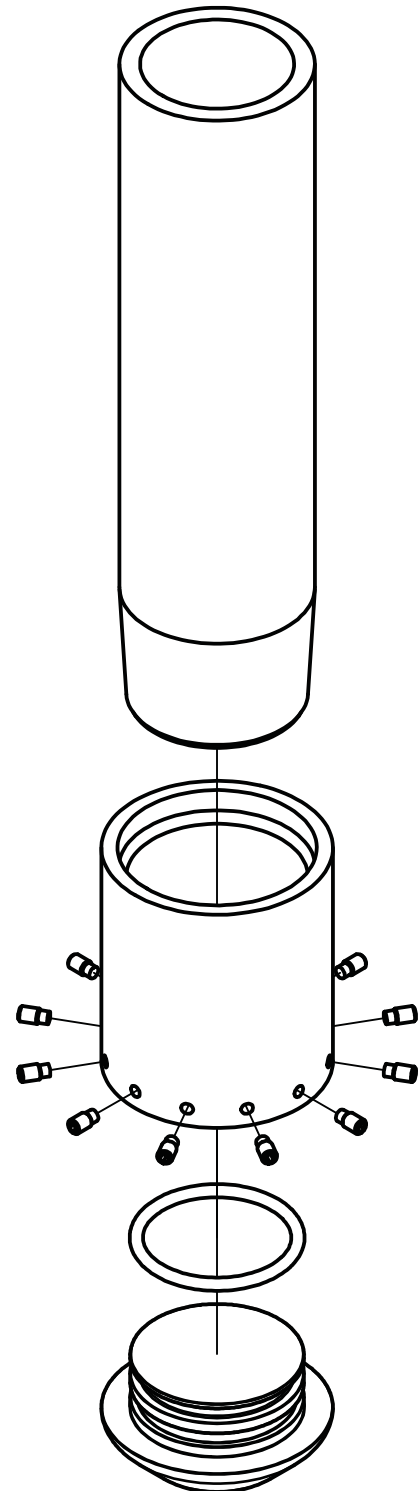
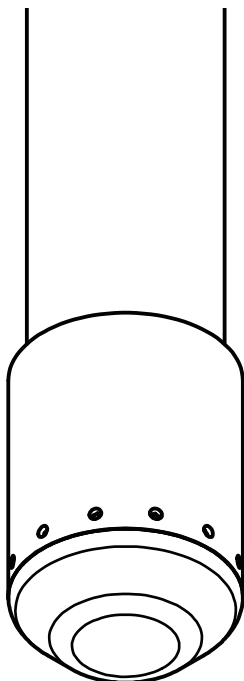
Pump out Plug Preparation

- 1.) Set the desired activation pressure by adding or removing brass shear screws. Activation pressure per screw can be found on the product brochure.
- 2.) Ensure threads of both the pin and box connections are clear of debris, and are free from damage and corrosion. If there is damage or corrosion on the threads, do not use the plug.
- 3.) Apply an appropriate thread lubricant to the EUE threads.



Installation

- 4.) Carefully place the shear coupling onto the bottom of the tubing string and start the first thread by hand until hand tight position.
- 5.) Use appropriate tool to apply a minimum of 350 FT/LBS of make-up torque to ensure the thread will seal for activation.



Activation

- 6.) To activate the Pump-out plug, increase the tubing pressure such that the differential tubing / casing pressure is exceeds the pressure set in step 1.