

HAWKEYE INDUSTRIES INC.

MODEL: Sparrow Hawk

INSTRUCTIONS: Installation of fluid level indicator

TANK PREPARATION

- A. Locate position for gauge head connection on tank roof at the recommended dimension (Fig. A) and weld a 1½" NPT coupling (No.11) in place if not existing. The Sparrow Hawk model can also use a 1" nipple in place of the 1½" NPT coupling.
- B. Locate position for float guide connection on tank roof at the recommended dimension (Fig. D) and weld two, 1¼" inch couplings (No.16) in place if not existing.
- C. Using a chalked line, snap a chalk line from the center of tank roof across the center of 1½" coupling (No.11) and down tank wall to indicate the center of the gauge board. Weld gauge board brackets (No. 10), with the center of the bracket on the chalk line, at a maximum of 8' centers.
- D. Suspend a plumb bob from the 1¼" inch couplings (No.16) to the tank floor and weld bottom float guide anchor clips (No.3) in place or use a Hawkeye anchor plate.

INSTALLATION

GAUGE BOARD - Drill appropriate sized holes in gauge board (No.7) and attach board to gauge board brackets (No.10) using ¼" x ¾" machine screws, ¼" nuts and washers.

INDICATOR & GUIDE KIT - Install the indicator and guide kit (Fig. B) on to the gauge board. Secure top cable guide bracket (No.22) to top of gauge board and the bottom cable guide bracket (No.23) to the bottom of gauge board using the ¼" x ¾" machine screws (No.17), ¼" nut (No.18) and washers. Tighten each cable stud on top cable guide bracket (No.22) until cable is taut.

GAUGE HEAD & FLOAT - Thread float cable (No.6) around the reel of the gauge head. Secure float cable in position. Send float cable stud (No.12) through gauge head mounting nozzle and tighten gauge head in place (No.11). Remove nut and washer from float cable stud (No.12) and thread the stud through the center hole of the float (No.4) and replace nut and washer. Tighten the nut until there are three threads showing. Pass other end of the float cable over roller guide on top cable guide bracket (No.22). Pull float to the top of tank roof and secure indicator (No.9) to the cable (No.6) with cable clamp (No.13) at the bottom of the gauge board and cut off excess cable.

FLOAT GUIDE KIT - Thread strap fork cable ends (No.5) through the 1¼" couplings (No.16) and then through the outside guide hole of the float (No.4). Attach strap fork end (No.19) to the bottom float guide anchor clips (No.3). Tighten top float guide anchor (No.2) to the 1¼" couplings (No.16). Remove PVC cap and pull float guide cable through the cable tightener until the spring is partially compressed, cut off excess cable, replace PVC cap and tighten. Pull indicator to the bottom to ensure that float travel is smooth and free of any binding.

#	DESCRIPTION	MATERIAL	QTY	#	DESCRIPTION	MATERIAL	QTY	#	DESCRIPTION	MATERIAL	QTY
1	SPARROW HAWK HEAD ASSEMBLY	ALUMINUM & 316 SS	1	9	LEVEL INDICATOR	COATED STEEL	1	18	1/4" NC NUT	ZINC PLATED	
2	TOP FLOAT GUIDE ANCHOR	ALUMINUM & 316 SS	2	10	GAUGE BOARD BRACKET	(BY CUSTOMER)		19	STRAP FORK END	316 SS	2
3	BOTTOM FLOAT GUIDE ANCHOR	(BY CUSTOMER) (OR BY HAWKEVE)	2	11	1 1/2" NPT COUPLING OR 1" NPT NIPPLE	(BY CUSTOMER)	1	20	#10-24 x 1" MACHINE SCREW	316 SS	2
4	HORIZONTAL FLOAT	POLYETHYLENE OR 316 SS	1	12	1/4"-24 FLOAT CABLE STUD	316 SS	1	21	#10-24 LOCK NUT	316 SS	2
5	FLOAT GUIDE CABLE	316 SS	1	13	1/8" CABLE CLAMP	316 SS	1	22	TOP CABLE GUIDE BRACKET	ALUMINUM	1
6	FLOAT CABLE	316 SS	1	15	INDICATOR GUIDE CABLE	316 SS	1	23	BOTTOM CABLE GUIDE BRACKET	ALUMINUM	1
7	GAUGE BOARD	ANODIZED ALUMINUM WITH 7 HEAD DECAL.	1	16	1 1/4" NPT COUPLING	(BY CUSTOMER)	2				
8	INDICATOR CABLE GUIDE	PLASTIC	1	17	1/4" NC X 3/4 SCREW	ZINC PLATED					

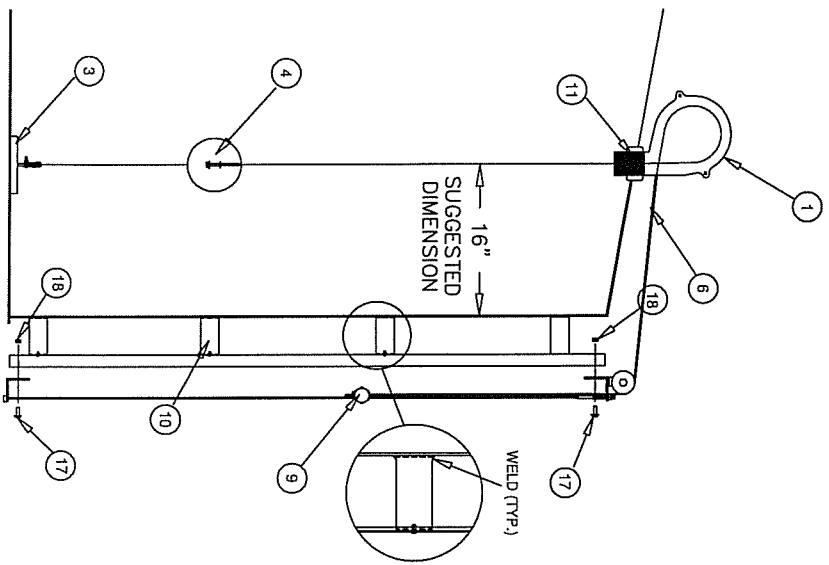


FIG. A

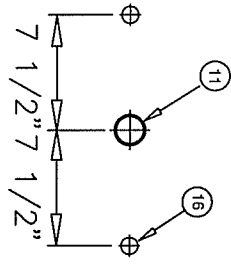


FIG. D

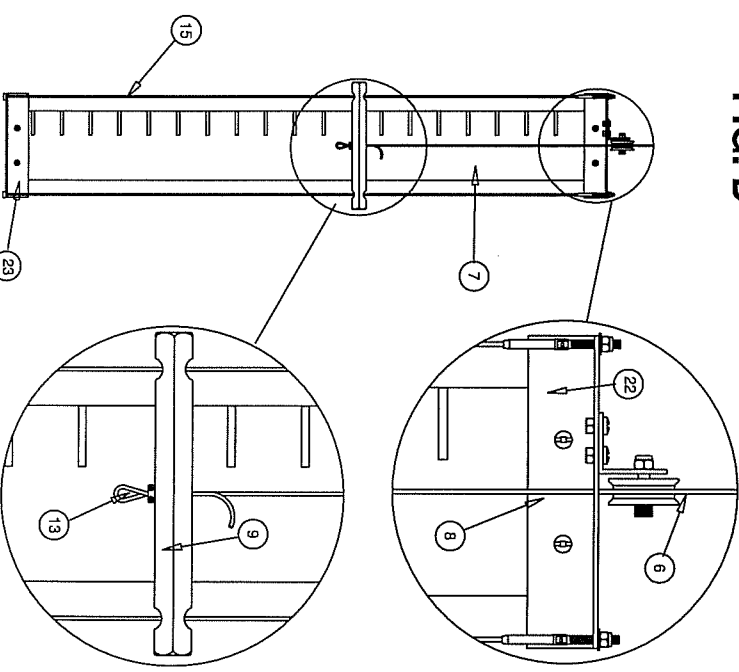


FIG. B

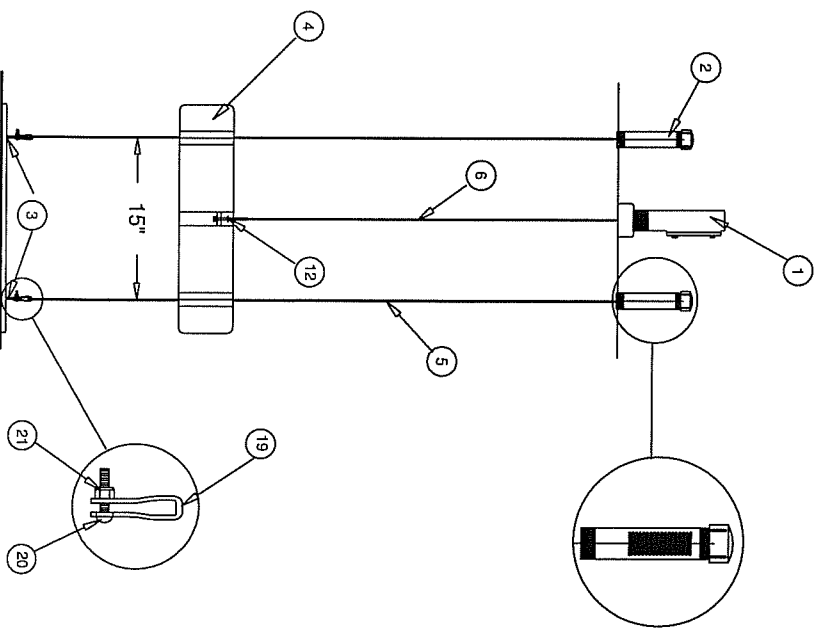


FIG. C