

HAWKEYE INDUSTRIES INC.

MODEL: Roadside Model 'S'

INSTRUCTIONS: Installation of fluid level indicator

TANK PREPARATION

- A. Locate position for gauge head connection on tank roof at the recommended dimension (Fig. A). Weld a 1½" NPT coupling (No.11) in place.
- B. Locate position for float guide connection on tank roof at the recommended dimension (Fig. D). Weld two, 1¼" couplings (No. 16) in place.
- C. Using a chalk line, from center of the tank roof to the bottom of the outside tank wall, snap the line about 2½" to the **left of the center** of the 1½" coupling (No. 11) to indicate the center of the gauge board. Weld gauge board brackets (No. 10), with the center of the bracket on the chalk line, to a maximum of 8' centers.
- D. Suspend a plumb bob from the 1¼" inch couplings (No. 16) to the tank floor and weld bottom float guide anchor clips (No.3) in place or use a Hawkeye anchor plate.

INSTALLATION

NOTE: DO NOT REMOVE TAPE FROM INDICATOR SPOOL UNTIL THE INSTRUCTIONS ADVISE

GAUGE BOARD - Drill appropriate sized holes in gauge board (No.7) and attach board to gauge board brackets (No.10) using ¼" x ¾" machine screws, ¼" nuts and washers.

INDICATOR & GUIDE KIT - Install indicator and guide kit (Fig. B) onto the gauge board. Secure top cable guide bracket (with idler pulley No.22) to top of gauge board and bottom cable guide bracket (No.23) to the bottom of gauge board using the supplied ¼" x ¾" machine screws (No.17), ¼" nuts (No.18) and washers. Tighten each cable stud on top cable guide bracket (No.22) until cable (No.15) is taut.

GAUGE HEAD & FLOAT - Pull float cable (No.6) from the gauge head and thread it through the 1½" coupling (No.11). Tighten the gauge head onto the coupling so that the open side of the gauge lines up with gauge board **and faces away from the board** (note the orientation of the head in Fig. A). At this point, the float cable may unravel into tank. Remove nut and washer from float cable stud (No.12) and thread the stud through the center hole of the float (No.4) and replace nut and washer. Tighten the nut until there are three threads showing. Rotate indicator spool counter clockwise until you can feel the float lift. Remove the tape from the indicator spool on the gauge head (No.1). Secure indicator spool and unravel three wraps of cable. Release the spool and pass cable over the idler pulley (No.22) and through indicator cable guide (No.8). Temporarily attach cable to indicator (No.9) using a cable clamp (No.13). Pull the indicator down (lifting float to the top of the tank). Reset indicator (No.9) at the maximum level on the gauge board (No.7). Adjust cable, tighten clamp (No.13), and cut off excess cable.

FLOAT GUIDE KIT – Thread strap fork cable ends (No.5) through 1¼" couplings (No.16) and then through the outside guide hole of the float (No.4). Attach strap fork end (No.19) to the bottom float guide anchor clip (No.3). Tighten top float guide anchor (No.2) to the 1¼" couplings (No.16). Remove PVC cap and pull float guide cable through cable tightener until the spring is partially compressed, cut off excess cable, replace PVC cap and tighten. Pull indicator to the bottom to ensure that float travel is smooth and free of any binding.

#	DESCRIPTION	MATERIAL	QTY	#	DESCRIPTION	MATERIAL	QTY	#	DESCRIPTION	MATERIAL	QTY
1	ROADSIDE HEAD ASSEMBLY	ALUMINUM & 316 SS	1	9	LEVEL INDICATOR	COATED STEEL	1	17	1/4" NC X 3/4 SCREW	ZINC PLATED	
2	TOP FLOAT GUIDE ANCHOR	ALUMINUM & 316 SS	2	10	GAUGE BOARD BRACKET	(BY CUSTOMER)		18	1/4" NC NUT	ZINC PLATED	
3	BOTTOM FLOAT GUIDE ANCHOR	(BY CUSTOMER) (OR BY HAWKEYE)	2	11	1 1/2" NPT COUPLING	(BY CUSTOMER)	1	19	STRAP FORK END	316 SS	2
4	HORIZONTAL FLOAT	POLYETHYLENE OR 316 SS	1	12	#10-32 FLOAT CABLE STUD	316 SS	1	20	#10-24 X 1" MACHINE SCREW	316 SS	2
5	FLOAT GUIDE CABLE	316 SS	1	13	1/8" CABLE CLAMP	316 SS	1	21	#10-24 LOCK NUT	316 SS	2
6	FLOAT CABLE	316 SS	1	14	INDICATOR CABLE	316 SS	1	22	TOP CABLE GUIDE BRACKET	ALUMINUM	1
7	GAUGE BOARD	ANODIZED ALUMINUM WITH 7 YEAR DECAL	1	15	INDICATOR GUIDE CABLE	316 SS	1	23	BOTTOM CABLE GUIDE BRACKET	ALUMINUM	1
8	INDICATOR CABLE GUIDE	PLASTIC	1	16	1 1/4" NPT COUPLING	(BY CUSTOMER)	2	24	GOSHAWK 4-20mA TRANSMITTER	ALUMINUM & 316 SS	1

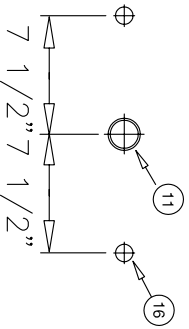
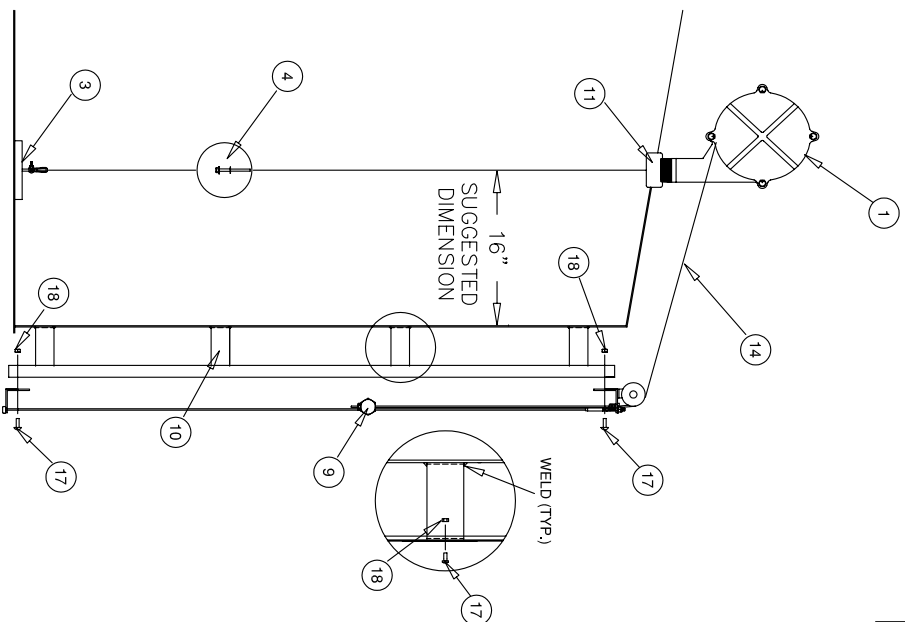


FIG. D

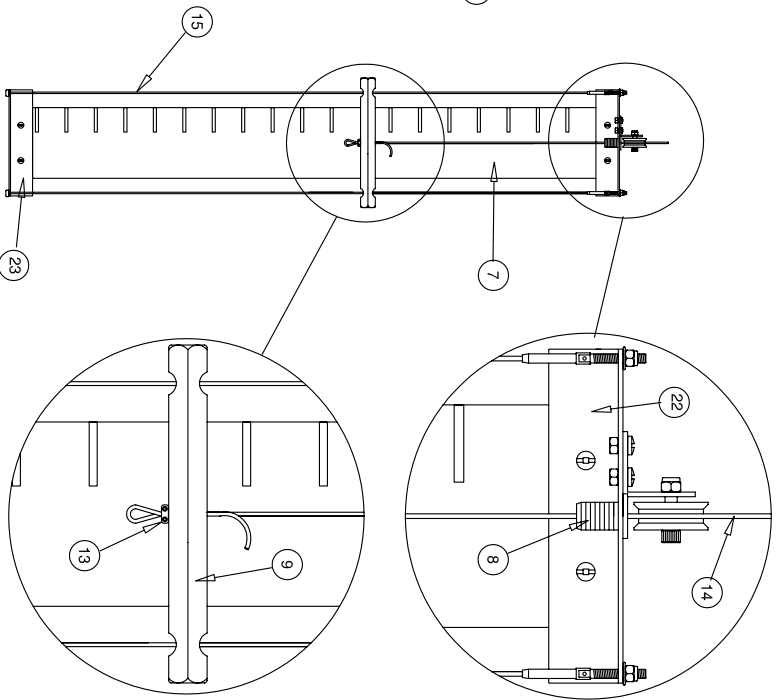


FIG. B

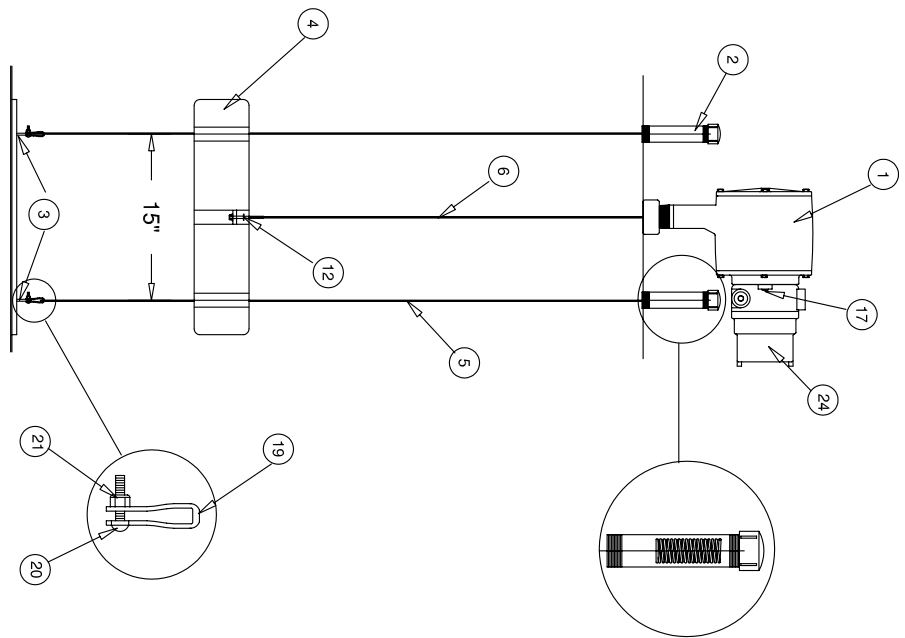


FIG. C

FIG. A