

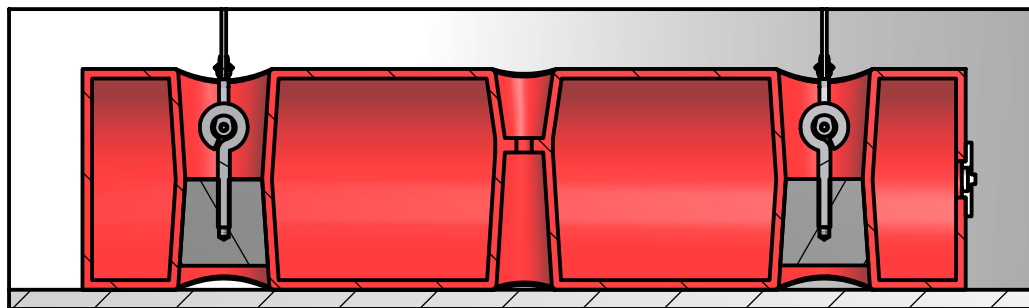
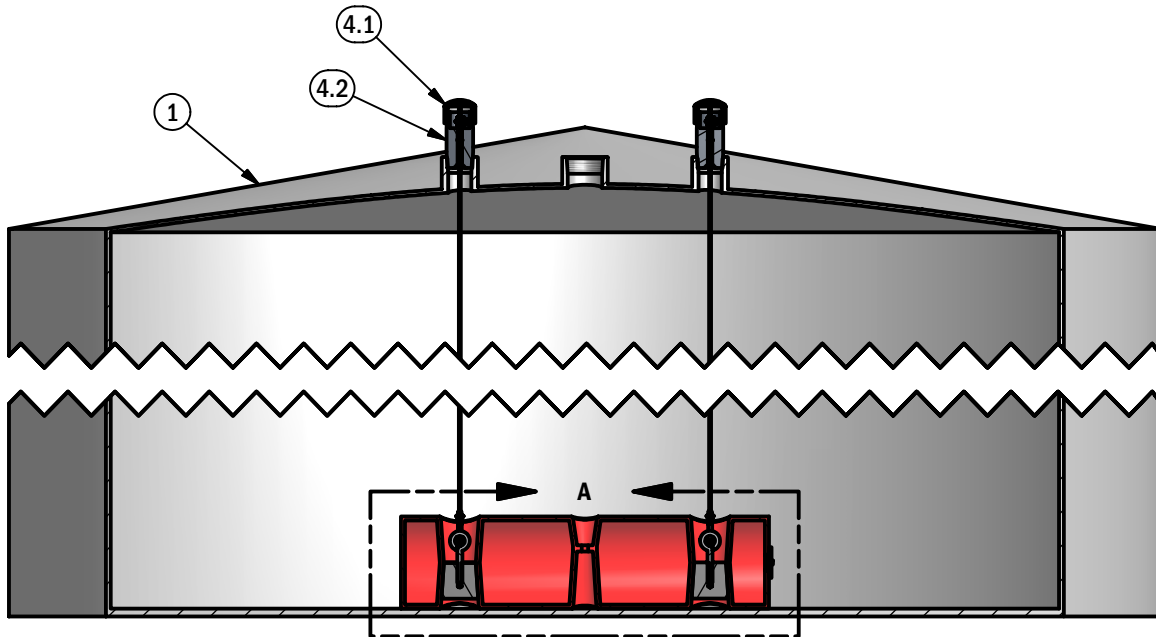
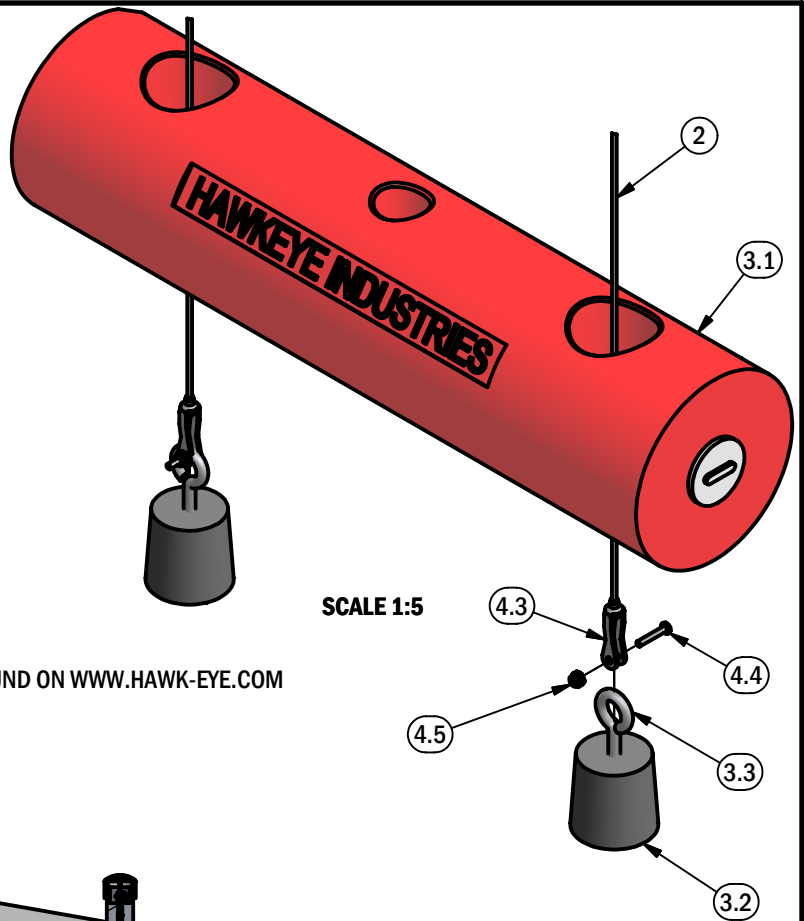
**BILL OF MATERIALS**

ITEM	QTY	PART NUMBER	TITLE
1	1	TANK-INST	
2	2	10-1006	1/8 SS Cable
3	1	10-1031-ASM	Float Guide Anchor
3.1	1	10-1032	Poly Anchor
3.2	2	10-1031-20	Plug
3.3	2	10-1031-30	Eye Bolt
4	2	IFGA-0001-ASM	Float Guide Cable Tensioner
4.1	1	10-1029	Housing Cap
4.2	1	10-1057	BODY
4.3	2	10-1044	Float Guide Cable Secure
4.4	2	HW-1024	Machine Screw
4.5	2	HW1009	Nylon Lock Nut

**INSTALLATION:**

1. INSTALL FLOAT GUIDE KIT STEPS 1-3\*
2. REMOVE PLUGS FROM BOTTOM OF POLY ANCHOR
3. RUN FLOAT GUIDE CABLES THROUGH ANCHOR AND ATTACH TO EYE BOLTS WITH FLOAT GUIDE CABLE SECURES
4. REPLACE PLUGS INTO POLY ANCHOR
5. COMPLETE FLOAT GUIDE KIT INSTALLATION STEPS 5-10\*

\*FLOAT AND FLOAT GUIDE KIT INSTALLATION INSTRUCTION FOUND ON [WWW.HAWK-EYE.COM](http://WWW.HAWK-EYE.COM)



**DETAIL A  
SCALE 1:5**



**DRAWING TITLE** Float Guide Anchor  
**DRAWING #** FGA-10