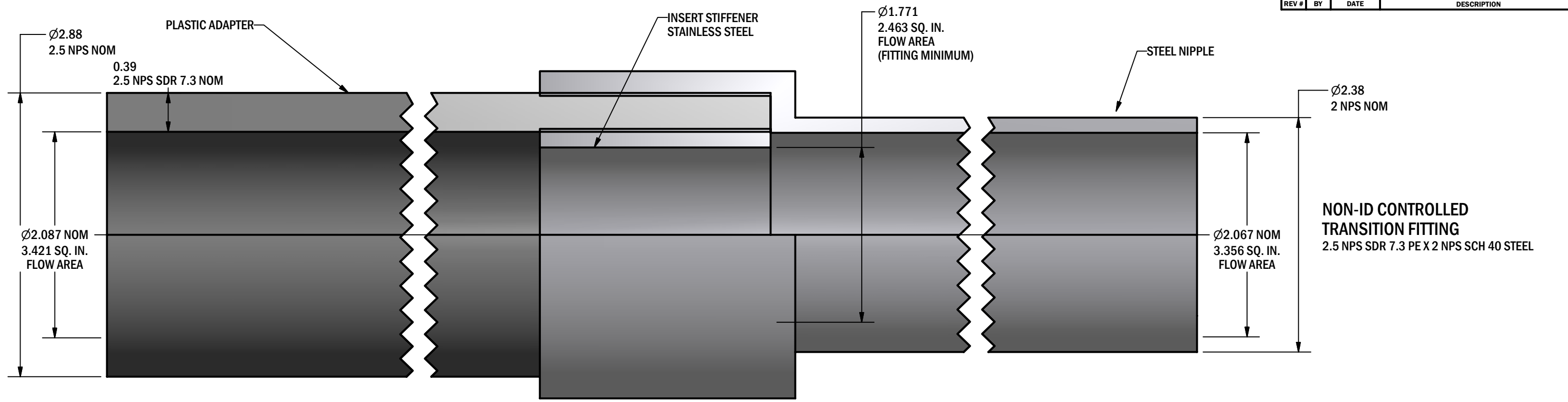
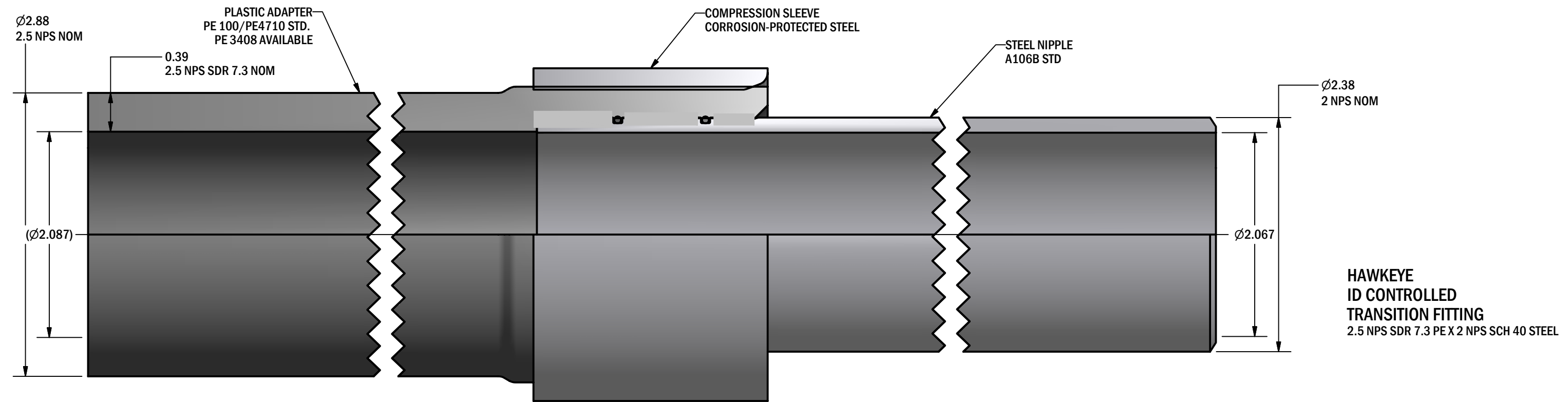


REVISION HISTORY			
REV #	BY	DATE	DESCRIPTION



**NON-ID CONTROLLED  
TRANSITION FITTING**  
2.5 NPS SDR 7.3 PE X 2 NPS SCH 40 STEEL



**HAWKEYE  
ID CONTROLLED  
TRANSITION FITTING**  
2.5 NPS SDR 7.3 PE X 2 NPS SCH 40 STEEL

\\Hawkeye\_Engineering\_Manufactured\_Products\_Transition\_Fittings\_Drawings\_Style\_Comparison\_ID\_v\_NonID\_Control\2.5 SDR 7.3 x 2 Sch 40 NIDC.idw

TOLERANCES		
DECIMAL	RMS	FRACTIONS
X.X ± 0.050	500	XX-X/X ± 1/16
X.XX ± 0.020	256	X-X/X ± 1/32
X.XXX ± 0.005	128	X/X ± 1/64
<b>T.I.R. ± 0.010    &lt;math&gt;\leq \pm 1^\circ&lt;/math&gt;    THRD ± 1 TURN</b>		
BREAK SHARP EDGES REMOVE ALL BURRS CHAMFER FIRST THREAD A/MATERIAL PREFERRED		
<b>ALL DIMENSIONS IN INCHES</b>		
© 2007 HAWKEYE INDUSTRIES INC.		

<b>PART #</b> 2.5 SDR 7.3 x 2 Sch 40 NIDC	<b>MATERIAL</b> A)
<b>PARTS REQUIRED</b>	<b>PART IN</b>
NOTICE OF PROPRIETY This document contains confidential and proprietary information of a sensitive nature. The drawing and associated information shall not be disclosed, in whole or in part, or be used to manufacture for use or sale by any party without explicit prior written consent of Hawkeye Industries Inc.	
UNPUBLISHED - CONFIDENTIAL - ALL RIGHTS RESERVED	

<b>BY</b> JH	<b>CHK</b> JH	<b>SCALE</b> 1:1
<b>DATE DRAWN</b> 24-Aug-07		
<b>EST. WEIGHT (LB)</b>		
<b>W.O. #</b>		
<b>DRAWING NUMBER</b>		

**HAWKEYE INDUSTRIES INC.**  
EDMONTON, ALBERTA, CANADA

<b>PROJECT / PRODUCT LINE</b> Transition Fittings	<b>DRAWING TITLE</b> General Config.
<b>PART NAME</b> Transition Fitting	
<b>PART DESCRIPTION</b> 2 SDR 7.3 x 2 SCH 40 Transition Fitting Comparison	

REV