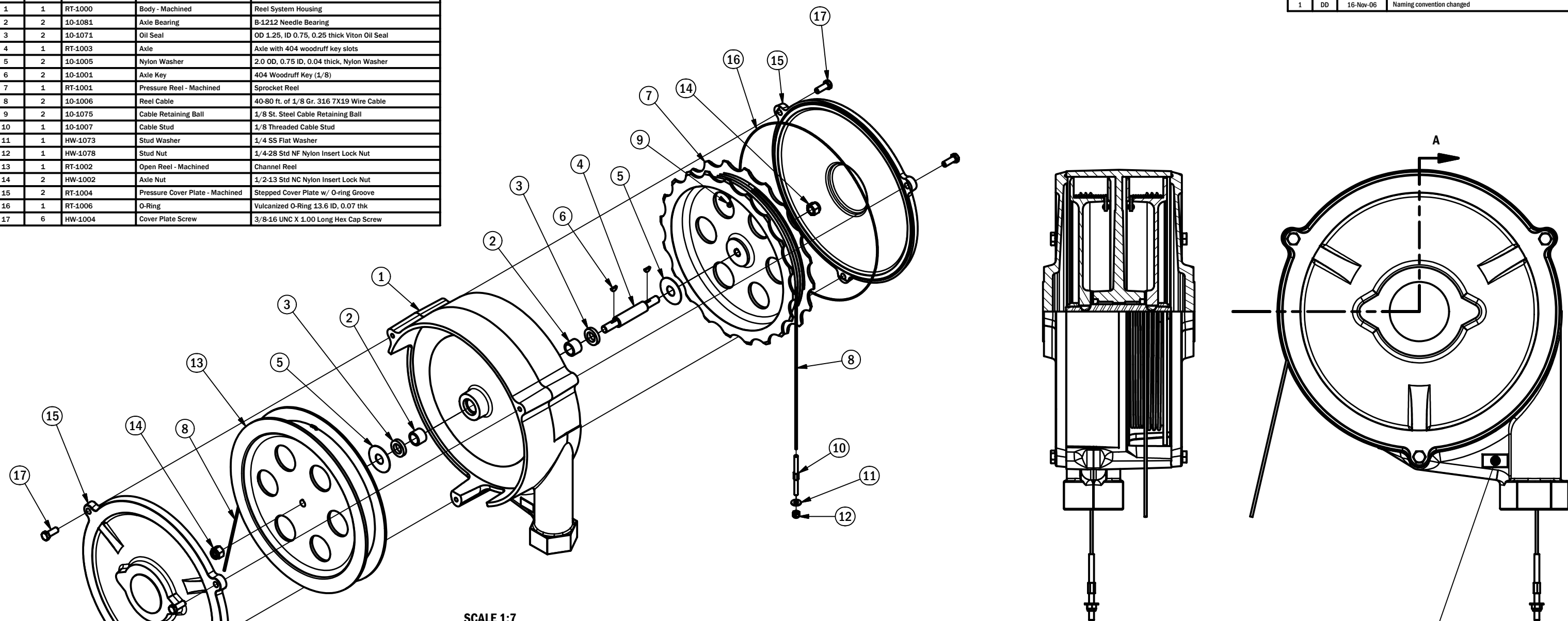


BILL OF MATERIALS				
ITEM	QTY	PART NUMBER	TITLE	DESCRIPTION
1	1	RT-1000	Body - Machined	Reel System Housing
2	2	10-1081	Axle Bearing	B-1212 Needle Bearing
3	2	10-1071	Oil Seal	OD 1.25, ID 0.75, 0.25 thick Viton Oil Seal
4	1	RT-1003	Axle	Axle with 404 woodruff key slots
5	2	10-1005	Nylon Washer	2.0 OD, 0.75 ID, 0.04 thick, Nylon Washer
6	2	10-1001	Axle Key	404 Woodruff Key (1/8)
7	1	RT-1001	Pressure Reel - Machined	Sprocket Reel
8	2	10-1006	Reel Cable	40-80 ft. of 1/8 Gr. 316 7X19 Wire Cable
9	2	10-1075	Cable Retaining Ball	1/8 St. Steel Cable Retaining Ball
10	1	10-1007	Cable Stud	1/8 Threaded Cable Stud
11	1	HW-1073	Stud Washer	1/4 SS Flat Washer
12	1	HW-1078	Stud Nut	1/4-28 Std NF Nylon Insert Lock Nut
13	1	RT-1002	Open Reel - Machined	Channel Reel
14	2	HW-1002	Axle Nut	1/2-13 Std NC Nylon Insert Lock Nut
15	2	RT-1004	Pressure Cover Plate - Machined	Stepped Cover Plate w/ O-ring Groove
16	1	RT-1006	O-Ring	Vulcanized O-Ring 13.6 ID, 0.07 thk
17	6	HW-1004	Cover Plate Screw	3/8-16 UNC X 1.00 Long Hex Cap Screw

REVISION HISTORY			
REV #	BY	DATE	DESCRIPTION
1	DD	16-Nov-06	Naming convention changed



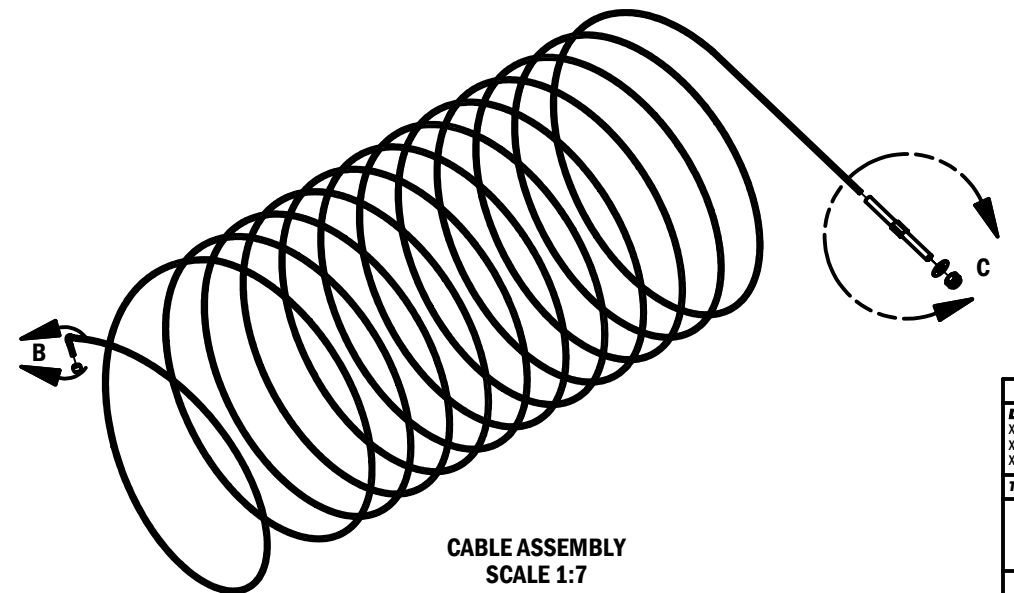
SCALE 1:7

ONCE CABLE IS SECURED TO REEL AND WOUND CABLE STUD IS SWAGED ONLY ONTO FREE END OF PRESSURE REEL CABLE USING 1/8 STUD DIE.

SECTION A-A

PUNCH SERIAL NUMBER ON EXTRUSION

- CABLE RETAINING BALL
1. END OF CABLE IS PLACED THROUGH HOLE ON REEL
  2. PLAIN BALL IS SWAGED ONTO END OF CABLE, USING 1/8 BALL DIE, TO SECURE THE CABLE ONTO THE REEL



CABLE ASSEMBLY SCALE 1:7

DETAIL C SCALE 1:3

DETAIL B SCALE 1:2

TOLERANCES		
DECIMAL	RMS	FRACTIONS
.XX ± 0.050	500	XX-X/X ± 1/16
.XXX ± 0.020	256	X-X/X ± 1/32
.XXX ± 0.005	128	X/X ± 1/64
T.I.R. ± 0.010    <math>\le \pm 1^\circ</math>    THRD ± 1 TURN		
BREAK SHARP EDGES REMOVE ALL BURRS CHAMFER FIRST THREAD A/MATERIAL PREFERRED		
ALL DIMENSIONS IN INCHES		
© 2006 HAWKEYE INDUSTRIES INC.		

PART #	RT-1007
PARTS REQUIRED	PART IN
NOTICE OF PROPRIETY This document contains confidential and proprietary information of a sensitive nature. The drawing and associated information shall not be disclosed, in whole or in part, or be used to manufacture for use or sale by any party without explicit prior written consent of Hawkeye Industries Inc.	
UNPUBLISHED - CONFIDENTIAL - ALL RIGHTS RESERVED	

MATERIAL	A)
FINISH / PROCESSING	
DRAWING NUMBER	RT-ASM

BY	DD	CHK	JH	SCALE	1:5
DATE DRAWN	28-Aug-06				
EST. WEIGHT (LB)					
W.O. #					

EDMONTON, ALBERTA, CANADA

PROJECT / PRODUCT LINE  
RedTail

DRAWING TITLE  
Assembly Drawing

PART NAME  
Redtail Assembly

PART DESCRIPTION  
0-80 ft. Sealed, Mechanically Indicating Gauge Head

REV 1

\\Hawks1\_Engineering\_Manufactured\_Products\_Redtail\_Drawings\RT-ASM.dwg