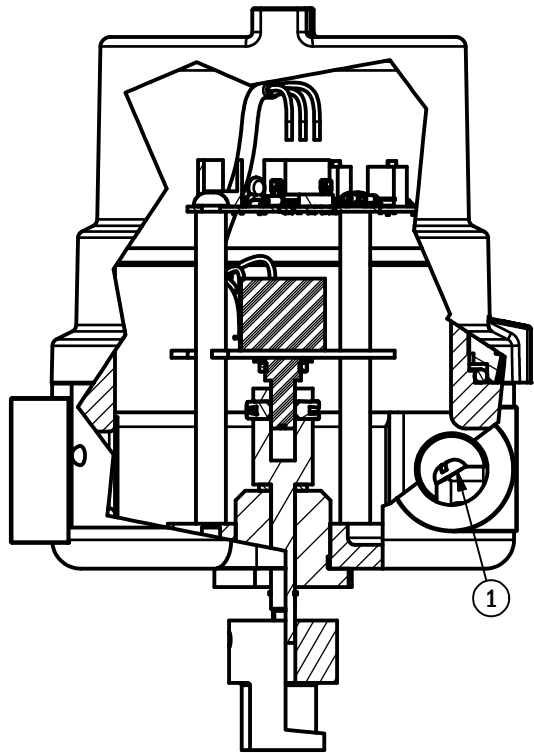
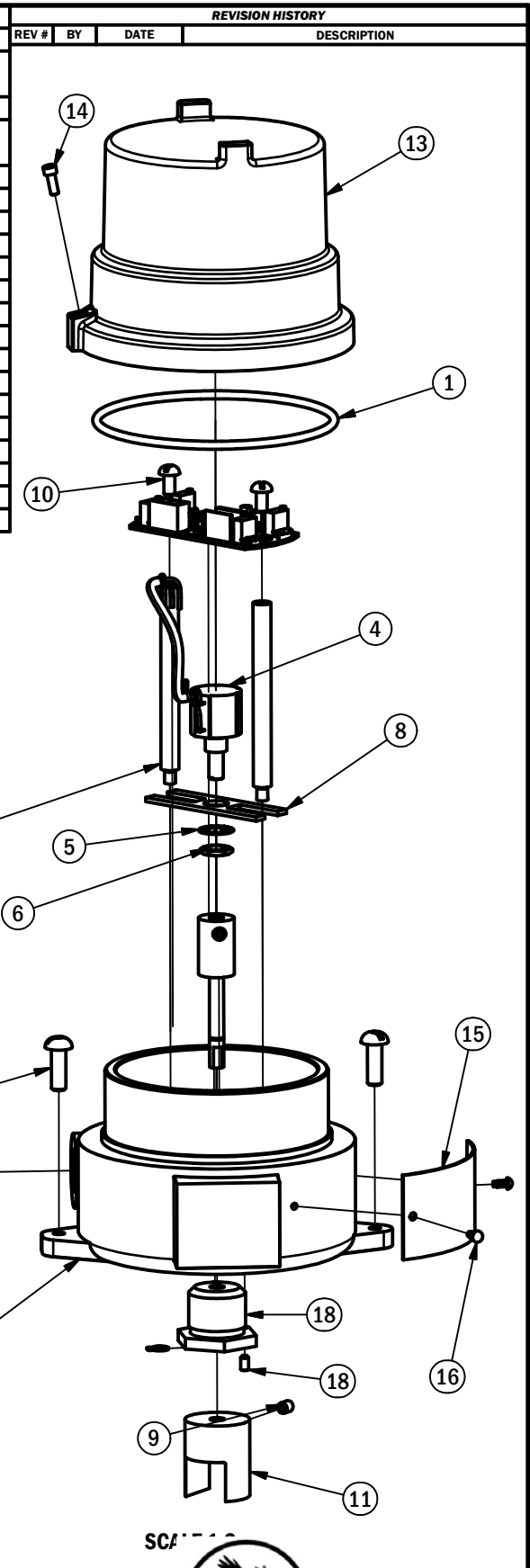


BILL OF MATERIALS				REVISION HISTORY				
ITEM	QTY	PART NUMBER	TITLE	DESCRIPTION	REV #	BY	DATE	DESCRIPTION
1	1	GH-1000	Enclosure Body-ASM	Killark 3/4" Back Box HKB Enclosure Body w/ 2-242 O-ring, internal ground screw, and CUP-2 Conduit Plug				
2	2	GH-1008	Stand Off	3-1/4 Long Stand Off				
3	1	GH-1005	Potentiometer-ASM	BI industries - Potentiometer - CCW/CW S 8146 R1K L.25 w/ internal tooth washer and nut and wiring				
4	1		Potentiometer	BI industries - Potentiometer - CW/CCW S 8146 R1K L.25				
5	1		Potentiometer Washer	0.6 OD, 0.42 ID Internal tooth lock washer - Goshawk 1				
6	1		Potentiometer Nut	3/8-32 UNEF - Goshawk 1				
7	1	GH-1019	Pontentiometer Wire Assembly	3x 7" TR-64 Tinned Cu Stranded Wires in Blue, White and Yellow, Twisted				
8	1	GH-1014	H-Clip	Potentiometer Mounting Plate - Goshawk 1				
9	1	HW-1020	Coupler/Drive Shaft Set Screw	10-32 UNF X 1/4 Long Hex Socket Set Screw				
10	2	HW-1000	Stand Off Screw	10-32 UNF X 3/8 Long Robertson Round Head Cap Screw				
11	1	GH-1011	Transition Coupler	1-1/8 Rod with 13/16 Section				
12	1	GH-1001	Enclosure Cover-ASM	Killark Dome Cover HK2D w/ 6-32 UNC - 3/8 SHCS				
13	1		Enclosure Cover	Killark Dome Cover HK2D				
14	1		Cover screw	6-32 UNC X 3/8 Long Socket Head Cap Screw				
15	1	GH-1015	ID Plate	1-1/2 X 3-1/4 ID Plate				
16	2	HW-1021	ID Plate Drive Screw	#4 Type U Round Head 1/4 Drive Screw				
17	2	HW-1022	Body Screw	1/4-20 UNC X 3/4 Long Robertson Round Head Cap Screw				
18	1	GH-1038	Operator Assembly	1/4 Shaft, 3/4-14 NPSM Bushing, 0.23mm Gap				
19	1	GH-1004	Circuit Board	PCB Assembly for 4-20 mA Transmitter Circuitry				



TOLERANCES		
DECIMAL	RMS	FRACTIONS
X.X ± 0.050	500	XX-X/X ± 1/16
X.XX ± 0.020	256	X-X/X ± 1/32
X.XXX ± 0.005	128	X/X ± 1/64
T.I.R. ± 0.010 $\leq \pm 1^\circ$ THRD ± 1 TURN		
BREAK SHARP EDGES REMOVE ALL BURRS CHAMFER FIRST THREAD A/MATERIAL PREFERRED		
ALL DIMENSIONS IN INCHES		
© 2006 HAWKEYE INDUSTRIES INC.		

PART # GHA-1000	
PARTS REQUIRED	PART IN
NOTICE OF PROPRIETY This document contains confidential and proprietary information of a sensitive nature. The drawing and associated information shall not be disclosed, in whole or in part, or be used to manufacture for use or sale by any party without explicit prior written consent of Hawkeye Industries Inc.	
UNPUBLISHED - CONFIDENTIAL - ALL RIGHTS RESERVED	

MATERIAL A)	BY DD	CHK JH	SCALE 1:2
FINISH / PROCESSING	DATE DRAWN 29-Jun-06		EST. WEIGHT (LB)
DRAWING NUMBER GH1-ASM		W.O. #	

HAWKEYE INDUSTRIES INC.
EDMONTON, ALBERTA, CANADA

PROJECT / PRODUCT LINE
Goshawk

DRAWING TITLE
Assembly Drawing

PART NAME
Goshawk 1 Assembly

PART DESCRIPTION
Electronic Indication Transmitter
(tanks up to 12 ft.(RS), 28ft.(RT))

REV 1

\\hawkeye-dc\Share\Files\Engineering\Manufactured Products\Goshawk\Drawings\Pre CSA (Before Sep.2010)\GH1-ASM.idw